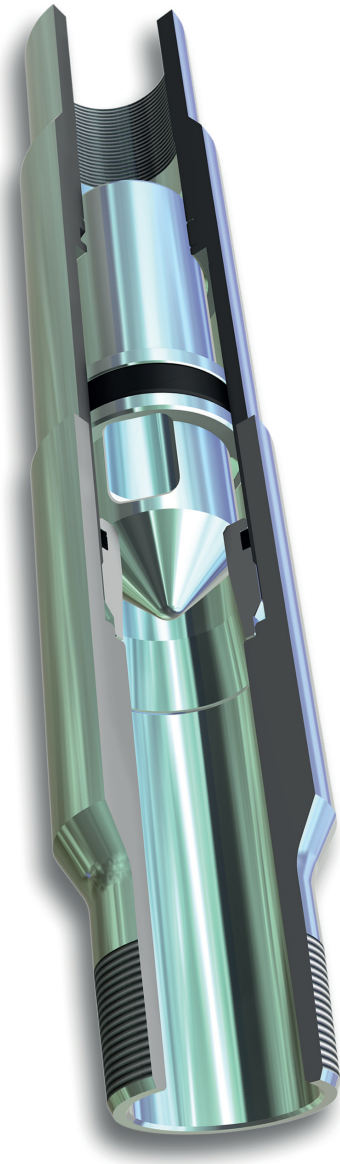


Non Return Valve (NRV)

The RMSpumptools NRV is a high specification precision engineered check-valve for use above an ESP and is specified when reliable long-term sealing is critical to prevent reverse direction of fluid. The NRV can be pressured against from above to 5000psi, to allow tubing string test or packer setting.



Typically used with ESP completions above the pump discharge to prevent flow back when pump is deactivated:

Applications

- Single ESP installation to prevent fluid fall-back
- Dual ESP installations to provide intervention - free ability to operate either ESP automatically

Features

- Piston-type design for reliability
- High specification inconel metal-to-metal seal faces to maintain protection against erosion and provide long operational life
- Self-aligning seal faces
- Internal flow areas match tubing ID
- Optional pin and box connections to customer choice
- Material housing options of carbon steel or 13% chrome steel

NRV Size Options

Sizes	OD	Length	Standard Connection	To Suit Casing
2-7/8"	4.625"	25"	Vam Top	5.5"
3-1/2"	4.81"	25"	Vam Top	7"
4-1/2"	6.5"	36"	Vam Top	7-5/8"
5-1/2"	7.5"	36"	Vam Top	8-5/8"
7"	8.25"	36"	Vam Top	9-5/8"

