

SPEEDFIT

Y-Tool Assembly with Pump Support Clamp

RMSpumptools **SPEEDFIT** is the new benchmark for high-speed, consistently reliable field installations of Y-Tool Systems utilising PSC technology. Used in conjunction with the RMSpumptools Extended Telescopic Swivel and Universal Bypass Neck Clamps, the system is easy to install resulting in quicker installations for the end user.

The **SPEEDFIT** Y-Tool System also eliminates the need for oversized re-entry guides therefore removing the possibility of them getting stuck downhole.

Significant savings on installation time are achieved compared with other similar applications. The PSC Assembly can be fitted to the ESP Motor Assembly offline and picked up as a single Assembly.

Dimension Data - Y-Tool Assembly

Part No	018170
Nominal Size	For 9-5/8" Casing
Tool Length	213.00"
Body Diameter	8.300"
Weight	367 lbs (166.5 kg)
Handling Sub Connection	3-1/2" EUE BOX
Pump Connection	3-1/2" EUE PIN
Bypass Connection	2-7/8" 6.4# PTX PIN
Teleswivel Stroke Length	60"
Bypass Nipple Size	2.75" PTX
Pressure Rating	5,000 psi
Max Operating Temperature	150°C
Metallurgy:	
Y-Tool Body	13 Chrome (18-22 Rc)
Teleswivel	420 MOD (18-22 Rc)
Tubing Joints	API L-80 13 Chrome
Elastomer	Aflas

Dimension Data - Pump Support Clamp

Part No	018173
Nominal Size	For 9-5/8" Casing
Tool Length	180.00"
Body Diameter	7.50"
Weight	133 lbs (60 kg)
Bypass Connection	2-7/8" 6.4# PTX BOX
Motor Base Connection	2-3/8" EUE PIN
Max Operating Temperature	150°C
Load Carrying Capacity	Upwards of 22,000 lbs
Metallurgy:	
Prong and Body	420 MOD (18-22 Rc)
Tubing Joints	API L-80 13 Chrome



Completion Series

Typical Single Y-Tool ESP Bypass System Layout

Optional Tools

Standing Valve

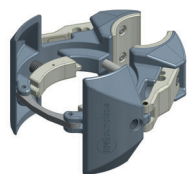
Isolation Sleeve

Equalising Blanking Plug

Self Seat
Logging Plug

Wireline Logging Plug

Coiled Tubing
Logging Plug



Universal Neck Clamp

SPEEDFIT
Pump Support Clamp



Pressure Tested Y-Tool Assembly

Handling Sub

Top Nipple Profile
(optional)

YTool

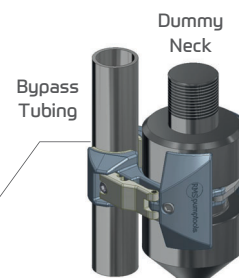
Bypass Nipple

Telescopic Swivel

Pump Sub

Bypass Tubing

Bypass Neck Clamp



Optional Pump
Support Block



Finned
Re-entry Guide