

# TS Series

## Ultra Low Profile Stealth Clamp™

The uniqueness of the patented Stealth Clamp™ lies in its Helix profile design which substantially increases surface area contact and load strength. The StealthClamp™ fully protects and secures all cables and control lines during installation and in operation, whilst providing total rotational lock protection.

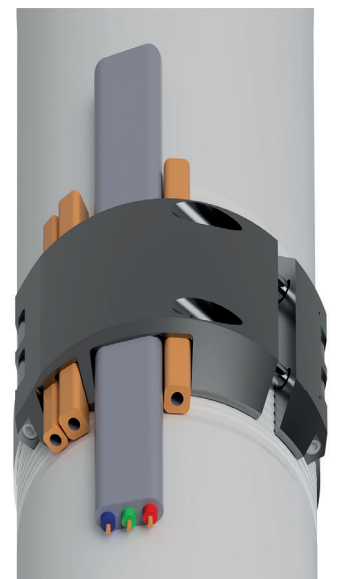
The minimal possible running OD allows for extremely tight clearances or heavy wall casing and the StealthClamp™ can withstand an axial load of 10 Tonnes (22,000lbs) whilst running in hole, without compromising casing integrity.

### Performance Data

Metallurgy Options:	13% Cr (18-22 Rc) 4140 (18-22 Rc)
Maximum Axial Loading:	10 Tonnes (22,000 lbs)
Working Temperature:	68°F - 250°F
Class of Service:	Standard / H <sub>2</sub> S

### Key Performance Features

- Premium Quality Patented Design
- Maximum Slippage Protection
- Zero Risk of Hang-up
- Lightweight for Ease of Handling
- Flexible and strong (tested load rating - 10 Tonnes)
- Optimum Protection of Cables and Lines
- No Loose Parts - all Captive Machined Components
- Chemical Injection Applications
- Smart Well Applications
- Split body with Helix internal profile machined from a single billet of material
- High tensile steel bolts offer speed during assembly and maximum clamping strength
- Helix profile matched to the Casing
- Anti-rotation with infinite adjustment
- Ultimate strength Steel Strap machined from a solid billet of material, secured and protected inside the recessed OD of the Casing
- Axial load is supported by the Helix profile and not the Fasteners



Shroud Casing OD	Effective Clamp OD	MLE Options	Control Lines	Casing Run Inside	Drift
5"	5.705"	#6 (0.970" x 0.380")	3 x 1/4" Bare Lines	6-5/8" 24#	5.796"
5-1/2"	6.000"	#6 (1.017" x 0.409")	1 x 1/4" Bare Line	7" 29#	6.059"
7"	7.860"	#4 (1.656" x 0.652")	2 x 11mm square	9-5/8" 53#	8.379"
7-5/8"	8.350"	#4 (1.295" x 0.501")	2 x 11mm square / 1 x 13mm square	9-5/8" 53#	8.379"
8-5/8"	9.275"	#3 (1.320" x 0.520")	1 x 0.535" square / 1 x 0.43" square	10-3/4"	9.500"
9-5/8"	10.500"	#3 (1.320" x 0.520")	2 x 11mm square / 1 x 13mm square	11-3/4"	10.616"
10-3/4"	11.600"	#3 (1.320" x 0.520")	2 x 11mm square / 1 x 13mm square	13-3/8"	11.969"

The Clamp can also be configured for protecting flatpack or chemical injection lines running outside the shrouded pump section